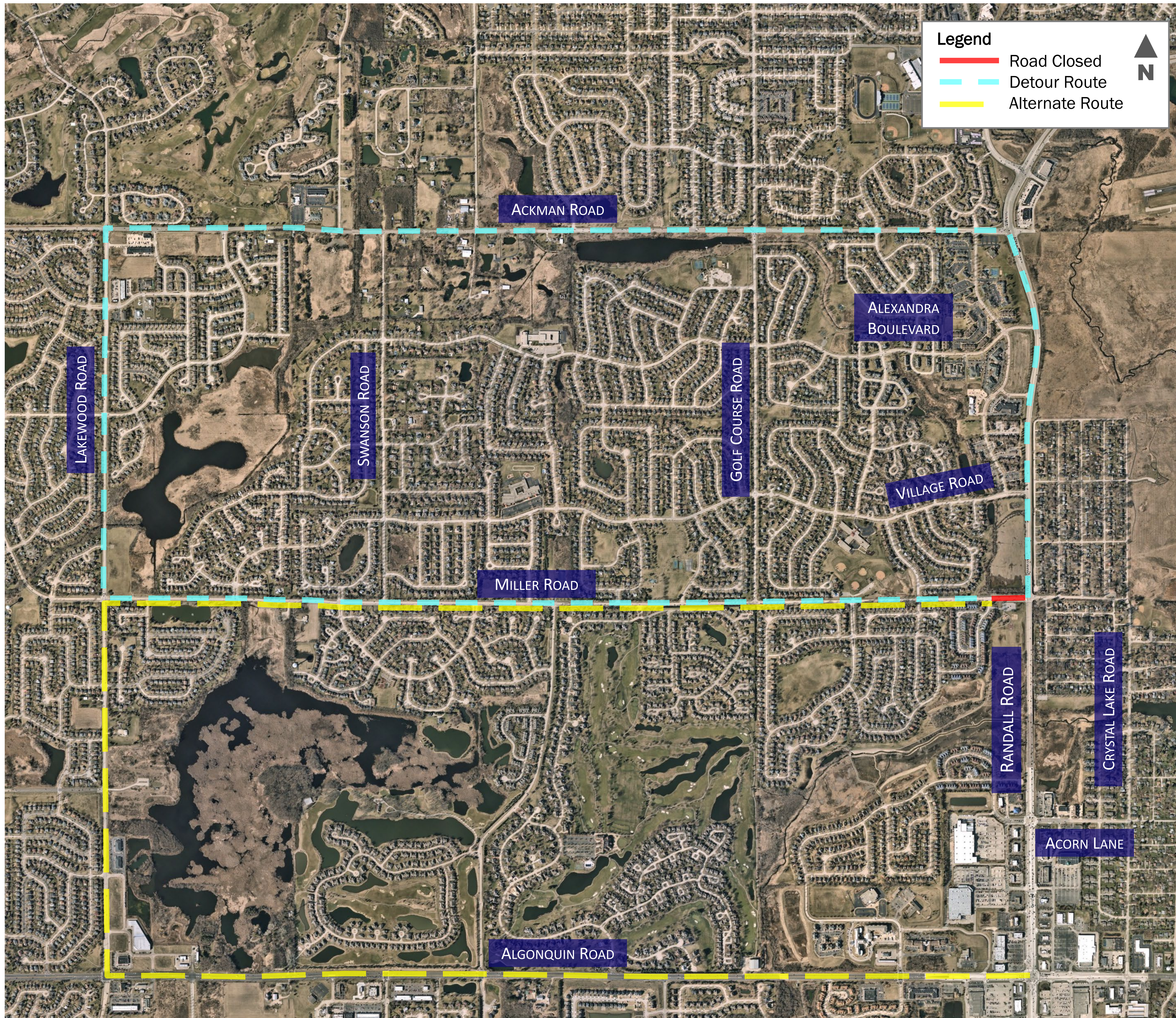


# ROADWAY DETOUR

## MILLER ROAD – WEST LEG

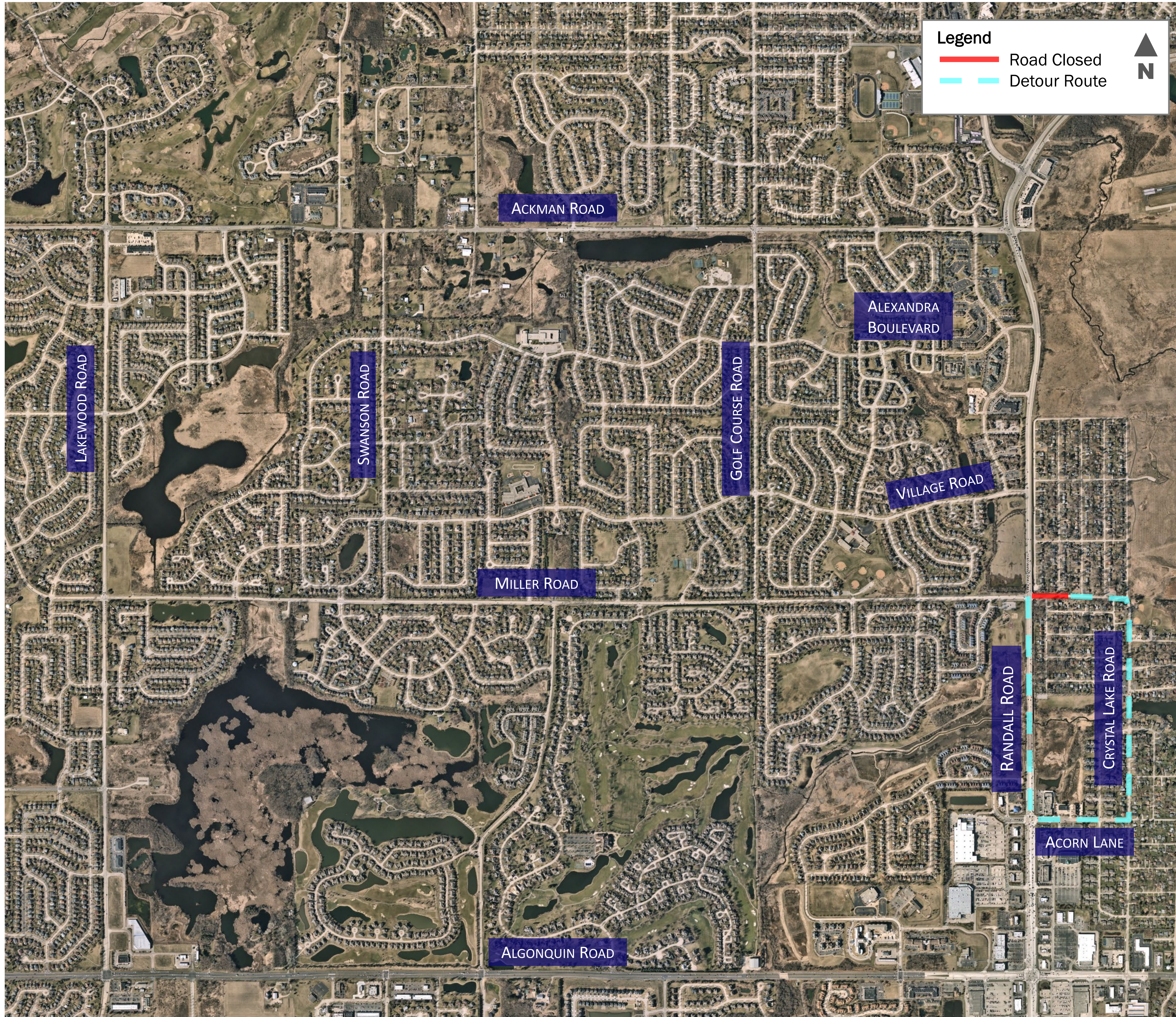


- ✓ Road closure necessary to construct new bridge over Woods Creek Tributary and raise Miller Road 3.5 feet
- ✓ Detour route: Randall Road / Ackman Road / Lakewood Road
- ✓ Full closure anticipated for 6-month duration starting June 2025
- ✓ Various other partial closures required throughout construction
- ✓ Closure will be coordinated with the school district and emergency services
- ✓ Advanced notice will be provided through public outreach



# ROADWAY DETOUR

## MILLER ROAD – EAST LEG

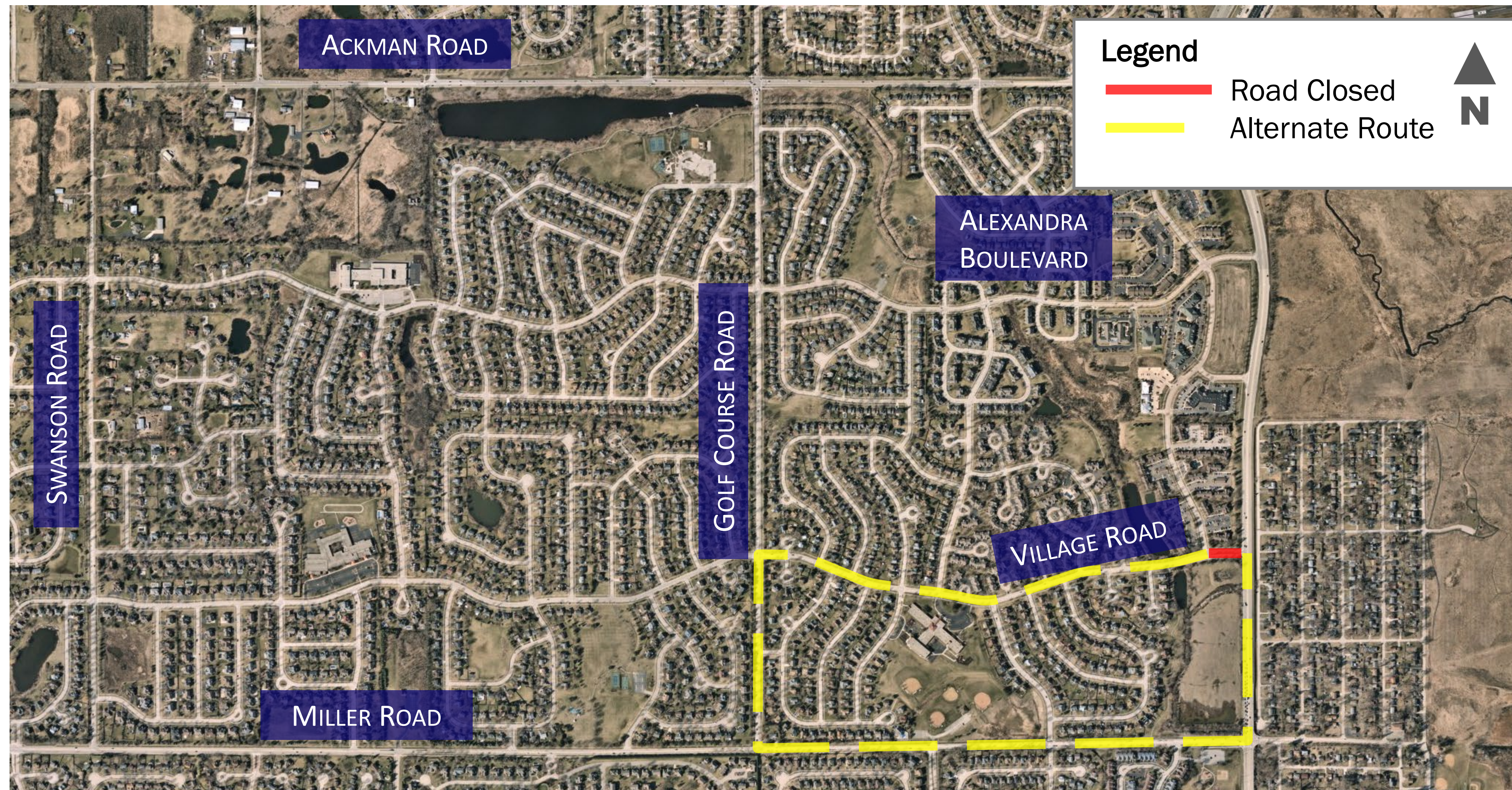


- ✓ Detour route: Randall Road / Acorn Lane / Crystal Lake Road
- ✓ Closure will be coordinated with the school district and emergency services
- ✓ Full closure anticipated for 1-week duration – timing TBD
- ✓ Various other partial closures required throughout construction.
- ✓ Advanced notice will be provided through public outreach
- ✓ Driveway access will be maintained for the properties off Miller Road



# ROADWAY CLOSURES

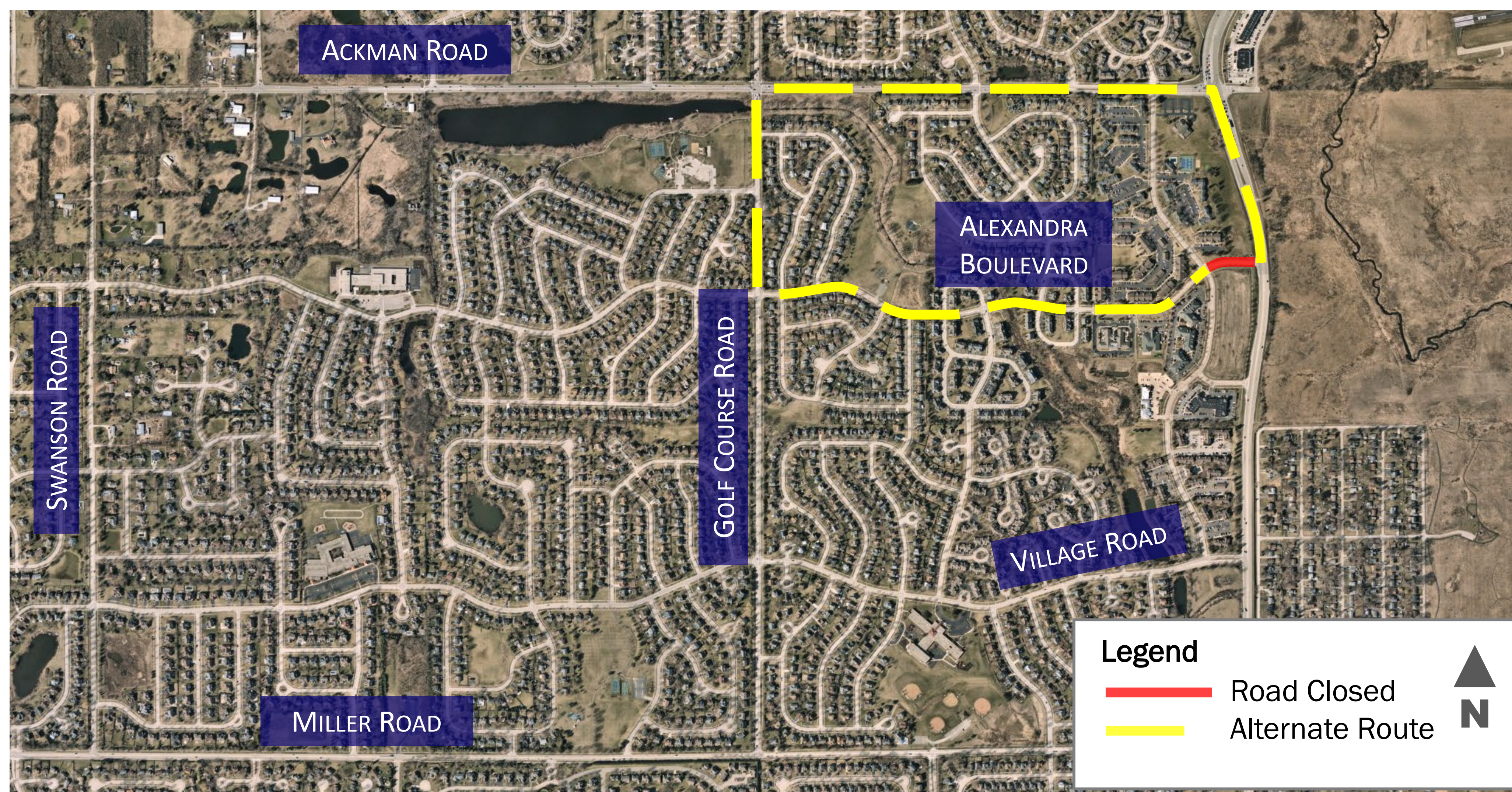
## VILLAGE ROAD, ANGELA LANE AND ALEXANDRA BOULEVARD



Village Road Closure



Angela Lane Closure



Alexandra Boulevard Closure

- ✓ Approximate 1 month anticipated durations for each closure in Fall 2025
- ✓ These closures **will not** occur at the same time. To minimize impact, at least two of the three northbound left turn lanes from Randall onto Miller, Village, or Alexandra will stay open throughout the work
- ✓ Closures will be coordinated with the school district and emergency services
- ✓ Advanced notice will be provided through public outreach

